

WESTMINSTER PRESBYTERIAN CHURCH

Large Print

Knowing Christ, Making Christ Known

4th Sunday of Easter
April 26, 2026
9:00 A.M. Traditional



GATHERING THOUGHT

“Be who you are and be that well.”

-St. Francis DeSales (1567 – 1622)

ORDER FOR THE WORSHIP OF GOD

April 26, 2026

9:00 A.M.

PRELUDE

WELCOME *(Please sign and pass the Friendship Pad in your pew)*

INTROIT *Let All the World in Every Corner Sing* E. Routley

Let all the world in every corner sing, my God and King!

The heavens are not too high, God's praise may thither fly; the earth is not too low, God's praises there may grow. Let all the world in every corner sing, my God and King!

CALL TO WORSHIP¹

Leader: We are called to help our neighbors

People: by caring for God's creation.

Leader: The earth is the lord's and everything in it

People: the world and its inhabitants too.


Leader: As people of God

People: we are meant to be responsible stewards of God's creation.

*** HYMN #15**

*All Creatures of Our God and King
(Stanzas 1,2,4,6)*

Unison




1 All crea-tures of our God and King, lift up your voice
2 O broth-er wind with clouds and rain, you nur-ture gifts
3 O broth-er fire, so warm and bright, chase off the shad-
4 All who for love of God for-give, all who in pain




and with us sing, Al-le-lu-ia! Al-le-lu-ia!
of fruit and grain. Al-le-lu-ia! Al-le-lu-ia!
ows of the night. Al-le-lu-ia! Al-le-lu-ia!
or sor-row grieve, Al-le-lu-ia! Al-le-lu-ia!

Unison




O broth-er sun with gold-en beam, O sis-ter moon
O sis-ter wa-ter, flow-ing clear, make mu-sic for
Dear moth-er earth, who day by day un-folds such bless-
Christ bears your bur-dens and your fears; so, e-ven in

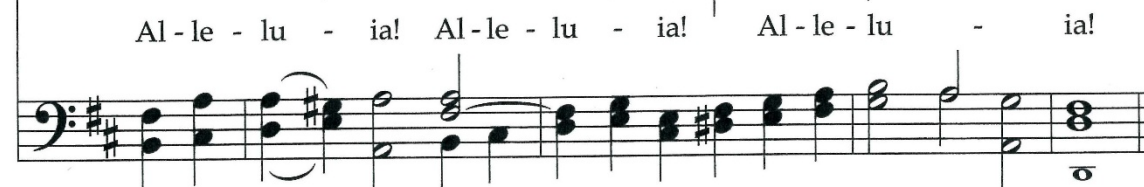
Harmony



with sil-ver gleam, sing prais-es! Al-le-lu-ia!
your Lord to hear. Sing prais-es! Al-le-lu-ia!
ings on our way, sing prais-es! Al-le-lu-ia!
the midst of tears, sing prais-es! Al-le-lu-ia!



Al-le-lu-ia! Al-le-lu-ia! Al-le-lu-ia!



5 And you, most gentle sister death,
waiting to hush our final breath:
Alleluia! Alleluia!
Since Christ our light has pierced your gloom,
fair is the night that leads us home.
Sing praises! Alleluia!
Alleluia! Alleluia! Alleluia!

6 O sisters, brothers, take your part,
and worship God with humble heart.
Alleluia! Alleluia!
All creatures, bless the Father, Son,
and Holy Spirit, Three in One!
Sing praises! Alleluia!
Alleluia! Alleluia! Alleluia!

UNISON PRAYER OF CONFESSION

God, forgive us for the damage we have done to the earth by not listening to your warnings. We have become too comfortable. We have failed to fix our own actions. God, guide us to open our eyes to the right path of caring for the planet and helping our neighbors. . . . *(time for silent prayers of confession)*

ASSURANCE OF PARDON

Pastor: Friends, believe the good news of the gospel.

People: In Jesus Christ we are forgiven.

* **RESPONSE #244** *This Joyful Eastertide (stanza 1)*

This joyful Eastertide, away with sin and sorrow!
My love, the Crucified, has sprung to life this morrow.
Had Christ, who once was slain, not burst his three-day prison,
Our faith had been in vain.
But now has Christ arisen, arisen, arisen, arisen!

APOSTLES CREED

I believe in God the Father Almighty, Maker of heaven and earth, and in Jesus Christ his only Son our Lord, who was conceived by the Holy Ghost, born of the Virgin Mary, suffered under Pontius Pilate, was crucified, dead and buried; He descended into hell; the third day he rose again from the dead; he ascended into heaven, and sitteth on the right hand of God the Father Almighty; from thence he shall come to judge the quick and the dead. I believe in the Holy Ghost, the holy catholic church, the communion of saints, the forgiveness of sins, the resurrection of the body, and the life everlasting. Amen.

THOUGHT FOR CHILDREN

CONGREGATIONAL GREETING – *“The Peace of Christ”*

PASTORAL PRAYER AND THE LORD'S PRAYER

.....Our Father, who art in heaven, hallowed be thy name. Thy kingdom come, thy will be done, on earth as it is in heaven. Give us this day our daily bread, and forgive us our debts, as we forgive our debtors, and lead us not into temptation, but deliver us from evil, for thine is the kingdom, and the power and the glory forever, Amen.

OFFERTORY *Soon-Ah Will Be Done* William Dawson

*(Refrain) Soon I will be done with the troubles of the world.
Going home to live with God.*

I want to meet my mother, I'm going to live with God. (Refrain)

No more weeping and wailing, I'm going to live with God. (Refrain)

I want to meet my Jesus, I'm going to live with God.

*** DOXOLOGY #609** *Praise God, from Whom All Blessings Flow*

Praise God, from whom all blessings flow, praise God, all creatures high and low; Alleluia, alleluia! Praise God, in Jesus fully known: Creator, Word, and Spirit one, Alleluia, alleluia! Alleluia, alleluia, alleluia!

*** UNISON PRAYER OF DEDICATION**

Holy God, you lead us, help us, and give us good news to share. Thank you for these gifts that we offer today. Bless and multiply them in the life of your church and your world, that all your beloved community may know the love and the peace that we have in Jesus Christ our Lord. Amen. *(please be seated)*

HYMN #726

Will You Come and Follow Me



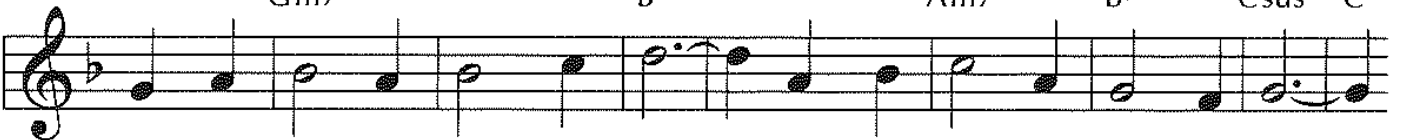
1 "Will you come and fol - low me if I but call your name?
 2 "Will you leave your-self be-hind if I but call your name?
 3 "Will you let the blind - ed see if I but call your name?
 4 "Will you love the 'you' you hide if I but call your name?
 5 Lord, your sum-mons ech - oes true when you but call my name.

(D) (A7) (Bm) (Em7) (G) (D)
 F C7 Dm Gm7 B^b F



Will you go where you don't know and nev - er be the same?
 Will you care for cruel and kind and nev - er be the same?
 Will you set the pris - oners free and nev - er be the same?
 Will you quell the fear in - side and nev - er be the same?
 Let me turn and fol - low you and nev - er be the same.

(Em7) (G) (F#m7) (G) (Asus)(A)
 Gm7 B^b Am7 B^b Csus C



Will you let my love be shown; will you let my name be known;
 Will you risk the hos - tile stare should your life at - tract or scare?
 Will you kiss the lep - er clean, and do such as this un - seen,
 Will you use the faith you've found to re-shape the world a - round,
 In your com - pa - ny I'll go where your love and foot-steps show.

(D) (A7) (Bm) (Em7) (G) (D)
 F C7 Dm Gm7 B^b F



will you let my life be grown in you and you in me?"
 Will you let me an - swer prayer in you and you in me?"
 and ad - mit to what I mean in you and you in me?"
 through my sight and touch and sound in you and you in me?"
 Thus I'll move and live and grow in you and you in me.

About midnight Paul and Silas were praying and singing hymns to God, and the other prisoners were listening to them. Suddenly there was such a violent earthquake that the foundations of the prison were shaken. At once all the prison doors flew open, and everyone's chains came loose. The jailer woke up, and when he saw the prison doors open, he drew his sword and was about to kill himself because he thought the prisoners had escaped. But Paul shouted, "Don't harm yourself! We are all here!"

The jailer called for lights, rushed in and fell trembling before Paul and Silas. He then brought them out and asked, "Sirs, what must I do to be saved?"

They replied, "Believe in the Lord Jesus, and you will be saved—you and your household." Then they spoke the word of the Lord to him and to all the others in his house. At that hour of the night the jailer took them and washed their wounds; then immediately he and all his household were baptized. The jailer brought them into his house and set a meal before them; he was filled with joy because he had come to believe in God—he and his whole household.

Pastor: The Word of the Lord.

People: Thanks be to God.

SERMON *Pay It Forward Reflections*

Kathy Smedley and Confirmands,
Maggie Terranova and Levi Leshock

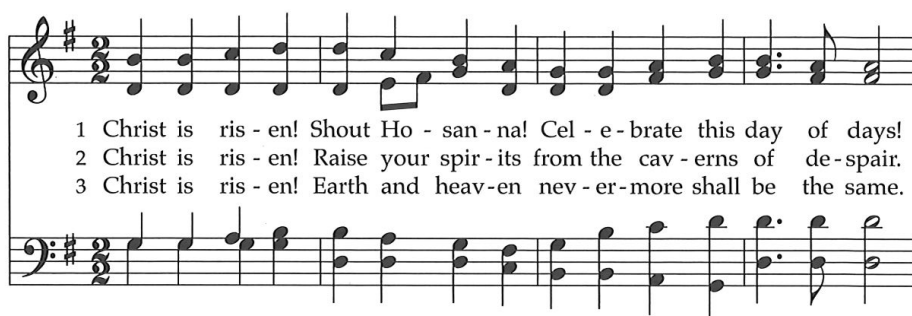
RECOGNITION OF NEW MEMBERS

Leader: Let us welcome these who have professed their faith.

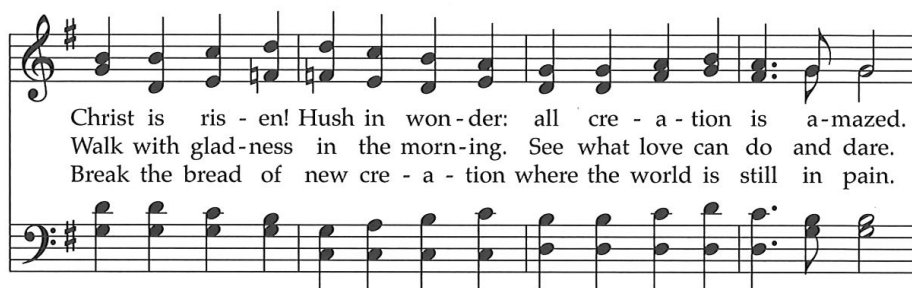
People: Friends, as members of one holy, catholic and apostolic church, we rejoice in your confirmation of faith. With joy and thanksgiving, we welcome you to active membership as we share in the worship and work of this people of God!

* HYMN #248

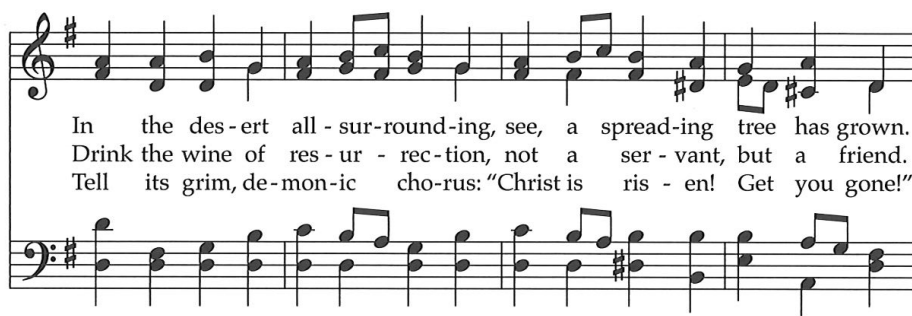
Christ is Risen! Shout Hosanna!



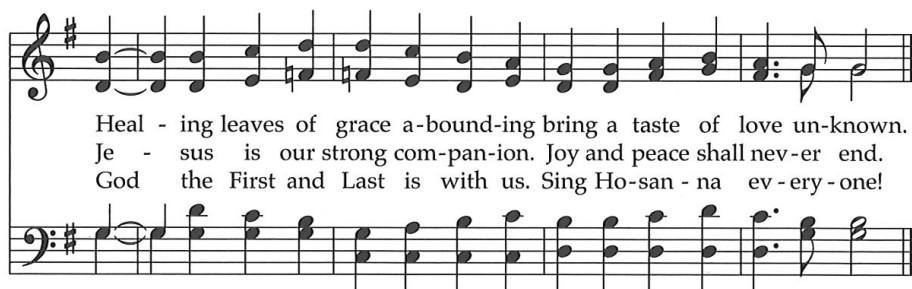
1 Christ is ris - en! Shout Ho - san - na! Cel - e - brate this day of days!
2 Christ is ris - en! Raise your spir - its from the cav - erns of de - spair.
3 Christ is ris - en! Earth and heav - en nev - er - more shall be the same.



Christ is ris - en! Hush in won - der: all cre - a - tion is a - mazed.
Walk with glad - ness in the morn - ing. See what love can do and dare.
Break the bread of new cre - a - tion where the world is still in pain.



In the des - ert all - sur - round - ing, see, a spread - ing tree has grown.
Drink the wine of res - ur - rec - tion, not a ser - vant, but a friend.
Tell its grim, de - mon - ic cho - rus: "Christ is ris - en! Get you gone!"



Heal - ing leaves of grace a - bound - ing bring a taste of love un - known.
Je - sus is our strong com - pan - ion. Joy and peace shall nev - er end.
God the First and Last is with us. Sing Ho - san - na ev - ery - one!

* BENEDICTION

POSTLUDE

Processional of Joy

Hal H. Hopson

* *Please rise in body or in spirit*

¹ *Liturgy for this service written by members of the 2026 Confirmation class.*

Copyright Information

Let All the World in Every Corner Sing

George Herbert, 17th cent., alt., Eric Routley, 1964, Music © 1976 Hinshaw Music, Inc.

All Creatures of Our God and King

Public Domain

This Joyful Eastertide

George Ratcliffe Woodward, 1894, alt.; David's Psalmen, 1685; harm. Charles Wood, 1902, Public Domain

Soon-Ah Will Be Done

William Dawson 1934, arr. 1947; 1962 Ren. By William L. Dawson, Tuskegee Institute, Alabama

Praise God, From Whom All Blessings Flow

Public Domain

Will You Come and Follow Me

John L. Bell and Graham Maule, 1987; Scottish melody; arr. John L. Bell, 1987, 1987 WGRG, Iona Community, GIA Publications, Inc.

Christ Is Risen! Shout Hosanna!

Brian Wren, 1984; Ludwig van Beethoven; adapt. Edward Hodges, 1842, alt., 1986 Hope Publishing Company

Processional of Joy

Hal H. Hobson, Carl Fisher, Inc.



Worship
Times:
9:00 a.m.
10:30 a.m.

WELCOME VISITORS! We are glad you are here today. To help us welcome you personally, please sign the *Friendship Pad* with your name, address, email and/or phone number.

If you are interested in knowing more about being a follower of Jesus, have any questions, or desire follow-up information, please contact the church office or use the QR code to register online.

The next new members' class is **Sunday, May 31, 2026 from 11:30 a.m.-2:30 p.m.**



Scan me

LECTIONARY PASSAGES: Acts 2:42-47 and Psalm 23 or Ezekiel 34:7-15 and Psalm 100; 1 Peter 2:19-25; John 10:1-10

NARRATIVE LECTIONARY: Acts 16:16-34, Luke 6:18-19, 22-23

NURSERY CARE (6 months thru 4 years old) is available **until 11:45am** in Room 109.

KIDSCONNECT MORNING SCHEDULE:

- 8:15am – **Childcare (6 months thru 4 years old)** is available **until 11:45am** in Room 109.
- 9:00am - **Children Pre-K through 5th grade** will start out in worship with their parents and after the Thought for Children will be dismissed to their classes. Dismissal time is 10:10am.

Nursery – Room 109 (Downstairs)

WeeConnect (Ages 3-5) – Chapel (Upstairs)

Grades K-1 – Room 103 (Downstairs)

Grades 2-3 – Room 405 (Upstairs)

Grades 4-5 – Room 406 (Upstairs)

JOURNEY CLASS, 10:15 A.M. IN SPELLMAN JR. Come join us as we continue with the second class on Sustainable Gardening.

* * * * *

| | |
|--|--|
| Ministers of Jesus Christ | All the Members of the Congregation |
| Pastors | Eric Dorville, Jon Frost, Leah Hrachovec |
| Parish Associate | Emily Chudy |
| Pastor Emeritus | Bob Young |
| Director of Music Ministries | Tim Evers |
| Associate Director of Music Ministries | Kirsten Santos Rutschman |
| Director of Spiritual Care | Mark Beazley |
| Director of Children and Family Ministries | Jill Reichert |
| Church Administrator | Erin Sheffield |
| Director of Finance | Sandy Kurek |
| Finance Assistant | Parker Hendrix |
| Office Manager | Jennie Moffitt |
| Office Assistant | Mandy Moore |
| Custodian | Joe Callan |
| Custodian | Patrick McDonald |

WORSHIP INFORMATION

WEEKLY WORSHIP SCHEDULE

Sunday Morning in the Sanctuary

9:00am – Traditional worship

10:30am – Contemporary worship with band

Wednesday Morning in the Chapel

9:10-9:30am – Prayer and Communion worship

CARING FOR OUR SANCTUARY – We ask that you refrain from bringing food and drink into our Sanctuary to protect our carpet.

PHONE MINISTRY – Calling in for Worship is offered for those who want to listen to the 9:00 am service by phone. Contact Nancy Christy at 610-696-3284 for dialing instructions.

A REMOTE TV MONITOR is in the Quiet Room (just outside the sanctuary in the west hallway) to view and hear worship in progress for those with restless children or who need to leave the sanctuary.

HEARING ASSISTANCE DEVICES are available for worship at the Information Center in the Narthex. Additionally, the sanctuary is equipped with an induction loop system that transmits to hearing aids and cochlear implants with telecoils. **PEW CUSHIONS** also available at the Information Center.

PRAY GROUNDS ARE LOCATED along the sides of our Sanctuary and are geared towards young children to engage in items from the cart during worship. This allows a space more suitable for them to be a part of the worship service.

LIVE STREAMING of our services is offered over the internet. A service bulletin for worship may be found through the link on our website or in the weekly update. We invite you to join us at westminsterpc.org when not able to attend worship.

FINANCIAL: Donate from your smart phone. Scan this image using your phone's QR code reader. Your Giving Makes a Difference. Give online (westminsterpc.org/give), text Give and amount to 1-877-361-7859, or mail to Westminster Presbyterian Church, 10 W. Pleasant Grove Rd., West Chester, PA 19382.



PRAYER MINISTRY members receive a weekly list of prayer requests via email and members include them in their conversations with God. To have a prayer request included in the Prayer Ministry or to become a member, contact Janet Gauger at gauger.janet@gmail.com or the church office. Anyone desiring to gift a Prayer Shawl/Comfort Critter to someone, please contact the church office.

THE SACRAMENT OF COMMUNION is celebrated the first Sunday of every month in all services. If you desire or know of someone desiring **HOME COMMUNION**, please contact Eric Dorville, Transitional Associate Pastor at 610-399-3377 ext. 109.

THE SACRAMENT OF BAPTISM is celebrated the **third Sunday of every month**. Our **BAPTISM CLASS** is offered the last Sunday of each month, except December at 11:45 a.m. in the library. Children are welcome to attend the class.



NEWS AND EVENTS

April 26, 2026



**Knowing Christ,
Making Christ Known**

WESTMINSTER PRESBYTERIAN CHURCH
10 W. Pleasant Grove Rd. West Chester, PA 19382
610-399-3377 www.westminsterpc.org

YOUTH CHOIR CABARET

3:30 pm, Spellman Hall, Today

Come out and support our Youth Choir for their end-of-year cabaret which will feature Cherub Choir and Children's Choir. We will also bid a fond farewell to our graduating high school senior singers. Beautiful music, delicious refreshments. A free will offering will benefit The Bridge Academy. You won't want to miss it!

NEW MEMBERS' CLASS

Sunday, May 3, 11:30AM – 2 PM in Spellman Hall

Are you interested to learn more about
or becoming a member of Westminster?

This class is for you! All are welcome.

There's no obligation to join.

A light lunch will be provided. Childcare is available if requested by May 26. Register online at: westminsterpc.org/about-us/membership or call the church office at 610-399-3377 to request a registration form.

Those joining will be introduced in worship on **Sunday, June 7 at either service**. For questions or more information, contact Pastor Eric Dorville at edorville@westminsterpc.org.

PICKLEBALL SEASON-4 IS HERE

Mondays, 6:30 – 8PM Beginning April 27

We can't wait to get back on the court! Whether you've played with us before or want to jump in for the first time, come enjoy the fun, competition, and fellowship. **All skill levels are welcome**. We'll meet **Mondays from 6:30–8:00 PM**, starting **April 27** and running through **May and June**. **Tim Jaques and Laureen Smith** will be leading on Monday nights.

We're also hoping to build a small team to help host **Wednesday evenings**. If you're interested, please respond in **Church Center** or email laureasmith@gmail.com or tjaques1@icloud.com. See you on the court for Season 4!

REGISTER FOR CAMP SPARK

A Place at the Table - June 22-26

"For I was hungry and you gave me food..." Matthew 25:35-40



Campers: Enroll now!

Some workshops are filling up!

Volunteers or Leaders: Adult & Youth Volunteers and Leaders are needed

FORGIVENESS BENEFITS THE FORGIVER

10:15 AM, Sunday, May 3, Spellman Hall

How does practicing forgiveness benefit us physically, emotionally and mentally? This interactive session will include stories, an exploration of the research of the positive impact of forgiveness, and a discussion of 12 tools to practice the process of forgiveness. Led by Eileen Donnelly who is a Forgiveness Coach through the Path of Forgiveness Institute. This session plays a great significance in our homes, our communities, and our world. You won't want to miss it!

NEW JOURNEY SERIES

THE EYES OF YOUR HEART

10:15 am Sunday, May 3-24 • Spellman Jr & Zoom

This class starts with meditation on a great work of art and then moves to a meditation on a related scripture. This is a blending of two Christian meditation practices; lectio divina or "divine reading" and visio divina or "divine seeing." By incorporating works of art (both familiar and new) into prayer, this invites us to bring our sense of sight as well as our imagination into our relationship with God, consider the gifts of creativity that God planted in the artist and in relationship to certain scripture.



TRIVIA TUESDAY

7:00 pm Tuesday, April 28 • Spellman Hall

Looking for fun night out? Test your knowledge and enjoy an evening of laughter, friendly competition, and great fellowship. Gather your team (or join one when you arrive) for exciting trivia rounds, music, and awesome prizes you won't want to miss. It's the perfect way to connect with old friends and make new ones, all are welcome! Light refreshments will be provided, but you are encouraged to bring your own to enjoy! Use Church Center to RSVP.

YOU ARE MAKING A DIFFERENCE: CELEBRATING OUR EARTH DAY IMPACT

Because of you, our Earth Day celebration was more than just an event—it was a powerful reminder of what a faithful, caring community can accomplish together. Your participation, generosity, and enthusiasm truly made a difference. One of the most inspiring outcomes was the success of our **Sneaker Drive**. Together, we collected more than **880 pairs of sneakers**, keeping them out of landfills and giving them new life. That's 880 tangible acts of stewardship—880 ways you helped care for God's creation.

Beyond the numbers, your presence and engagement helped make the day meaningful.

Whether you learned something new, shared a conversation, or reflected on our call to care for the Earth, you were part of something important.

Each small step matters. Every choice to reduce, reuse, and be mindful adds up to real change.

And as this Earth Day showed so clearly—you are making that change happen.

Thank you for supporting our Care for Creation team, living out your faith in action and for continuing to care for the world God has entrusted to us.

PLANT SHARE, SUNDAY, MAY 17

8:30am-12:00pm under the Front Portico.

Clearing out plants from your yard this spring? Dividing your perennials? Extra plants to share? Check out Westminster's plant share! Drop off your plants, seeds, old garden tools to share in the labeled boxes under the front portico and the café entrance any time. Please include plant type. Join the fun Sunday, May 17, swapping! Questions? Contact the Church Office.

HEALTH AND WELLNESS NEWSLETTER

Look for the spring addition of Westminster's Health and Wellness newsletter located in the hanging files by the outside doors. A link is included in the weekly e-newsletter.

ANNOUNCEMENTS

Called to Serve? Westminster's 2026 Nominating Committee invites you to prayerfully suggest names of members you believe may be called to serve in ordained and/or elected leadership as an Elder, Deacon, Trustee, Preschool Board member, or a future Nominating Committee. You may use this QR code or fill out a paper Connect card and place in the offering plate. Thank you for helping our congregation discern God's gifts among us.



Expired/Unwanted RX Collection Please bring your expired and unwanted prescription and over the counter medications for proper disposal. Westminster will host a collection event along with the Chester County Sheriff's Medication Drop Box. They will be available on May 3, from 8:30-11:30am. No syringes please. Questions email Bschivito@gmail.com.

Westminster's Library-Please visit the library to see our "Earth Day" display. While there, feel free to check out any books, DVDs, and study guides of interest. Please remember to check out items taken from the library.

Journey April 26 Class: For the Birds and Butterflies

Discover how to welcome birds and butterflies to your yard or patio by creating safer havens for adults and their young. Join long-time Longwood Gardens instructor Laurie Albrecht on April 26 for the conclusion of a three-part Sustainable Gardening series: "For the Birds and Butterflies." You'll learn about feeding patterns, what plants to plant, and how to help adults successfully raise their young. Meet in Spellman Jr. at 10:15 or join Zoom. Get a chance to win a native plant container designed for these winged wonders.

TUESDAY Fellowship continues April 28 and our speaker is the Executive Director for Voices Underground, LaNisha Cassell. The title of her presentation is:

Voices Underground & What is Juneteenth?

"After Ms. Cassell's presentation, David Walter will show a short video of the military ceremony honoring the 14 United States Colored Troops buried at Shiloh AME cemetery in Westtown. The Fellowship Group, and several individual members, generously contributed for the historical roadside marker placed there." All may enter by the single door just to the right of the main entrance. Please arrive at 9:30 for snacks, tea, & coffee with GREAT conversations. **LaNisha Cassell's** presentation will be from 10 - 11 AM.

All are welcome to attend Tuesday Fellowship in Spellman Jr or **ZOOM** online. Those wishing to ZOOM should contact Dave Goodale (dbgp@pharma.com) for the link.

Dear Church Family, thank you for the generous monetary gift, the cards, and the well-wished wishes you shared with me upon my retirement. Your kindness touched me deeply. As I look back on the many years we have shared – worshipping, serving, growing, and supporting one another – I am filled with gratitude. This congregation has been my home and my joy. Please know that your generosity will be remembered not only for the gift itself, but for the love behind it. May God continue to guide and bless this wonderful church family. Blessings, Barb Drain

FINANCIAL



Donate from your smart phone. Scan this image using your phone's QR code reader.

March 2026

General Fund – Mission and Church Operations

| Year To Date | Actual | Budget | Fav/ (Unfav) |
|-----------------------|---------------|---------------|-------------------------|
| Pledged Revenue | \$848,501 | \$778,564 | 8.9% |
| Non-pledged giving | \$ 51,133 | \$ 56,000 | (8.6%) |
| Other Revenue | \$ 103,967 | \$ 89,719 | 15.8% |
| Total Revenue | \$1,003,601 | \$924,283 | 8.6% |
| Total Expenses | \$606,997 | \$613,444 | (1%) |
| Net Surplus (Deficit) | \$396,605 | \$310,840 | 27.5% |

Year-to-date revenue remains strong running 8.6% above budget, with giving exceeding expectations for the second consecutive month and first-quarter giving reaching 40.1% of the annual budget. This follows our historic pattern of giving with some members using QCDs or CGA to fulfill pledges early in the year.

Expenses are slightly under budget overall despite some timing-related overages in March. Additional revenue streams and program participation (especially youth retreats) are exceeding expectations. As a result, the church has generated a net surplus 27.5% ahead of budget, while continuing to monitor seasonal giving patterns.

Attendance –4/19/26 – Total (996)

9:00 am - In Person –333 , Phone –5 , Online – (428)

10:30am - In Person –115 , Online -- (115)

Offering Figures for 4/19/26 (including online giving)

| | |
|---------------------------------------|-----------------|
| General Fund-Sunday Svc/Mailed/Online | \$ 46,359.85 |
| Per Capita | \$ 206.00 |
| OGHS (On Great Hour of Sharing) | \$ 6.95 |
| Pastor’s Discretionary | \$ 300.00 |
| Music Supply Fund | <u>\$ 50.00</u> |
| Total | \$ 46,922.80 |

Calendar for the Week of April 26, 2026

Sunday, April 26

- 8:15 A.M. Nursery care (109)
- 9:00 A.M. Traditional Worship (Sanctuary)
- 9:00 A.M. Kids Connect/ Wee Connect (Various Rooms)
- 10:15 A.M. Journey Class (Spellman Jr.)
- 10:30 A.M. Contemporary Worship (Sanctuary) / Young Children and Worship (Chapel)
- 11:45 A.M. Baptism Class (407)
- 3:30 P.M. Youth Choir Cabaret (Spellman Hall)
- 5:30 P.M. Youth Group (The Cove)

Monday, April 27

- 9:00 A.M. Thrift Shop open until 3 PM
- 4:00 P.M. Mental Wellness Committee (Zoom)
- 6:15 P.M. The Chosen Study (Chapel)
- 6:30 P.M. Pickleball (Back Parking Lot)
- 8:00 P.M. Living Waters Leaders Meeting (Zoom)

Tuesday, April 28

- 7:30 A.M. “Morning Joe” Parent Support Group (407)
- 9:30 A.M. Tuesday Fellowship (Spellman Jr.)
- 10:00 A.M. Library Committee (Library)
- 10:00 A.M. Thrift Shop open until 3PM
- 6:00 P.M. Alzheimer’s/Dementia Group (Spellman Jr.)
- 7:00 P.M. Trivia Tuesday (Spellman Hall)
- 7:00 P.M. Endowment Committee (Zoom)

Wednesday, April 29

9:10 A.M. Chapel Service (Chapel)

9:30 A.M. Women's Weekly Bible Study (Spellman Jr.)

10:00 A.M. Thrift Shop open until 3PM

11:30 A.M. Women's Bible Study Luncheon (Spellman Hall)

4:15 P.M. Children's and Cherub Choir Rehearsal (Spellman Hall)

6:30 P.M. Worship Collective (Sanctuary)

7:00 P.M. Chancel Ringers Rehearsal (Spellman Hall)

7:00 P.M. Gathering of Men (Spellman Jr.)

7:00 P.M. The Chosen Study (Zoom only)

Thursday, April 30-Thrift Shop Closed

7:00 P.M. Boy Scouts (Spellman Hall)

7:00 P.M. Celebrate Recovery (online only)

7:00 P.M. Chancel Choir (Music Room)

Friday, May 1

10:00 A.M. Thrift Shop open until 3PM

Saturday, May 2

7:30 A.M. Men's Fellowship (407)

9:00 A.M. Thrift Shop open until noon

Sunday, May 3

9:00 A.M. Mental Wellness Event (Spellman Hall)

8:15 A.M. Nursery care (109)

9:00 A.M. Traditional Worship (Sanctuary)

9:00 A.M. Kids Connect/ Wee Connect (Various Rooms)

10:15 A.M. Journey Class (Spellman Jr.)

10:30 A.M. Contemporary Worship (Sanctuary) / Young Children and Worship (Chapel)

5:00 P.M. Taizé Worship (Chapel)

**For questions about any of our activities or events,
visit the website at westminsterpc.org or call the
church office.**

FOOD FOR OUR NEIGHBORS

APRIL – CANNED MEAT AND FISH

MAY – CANNED FRUIT